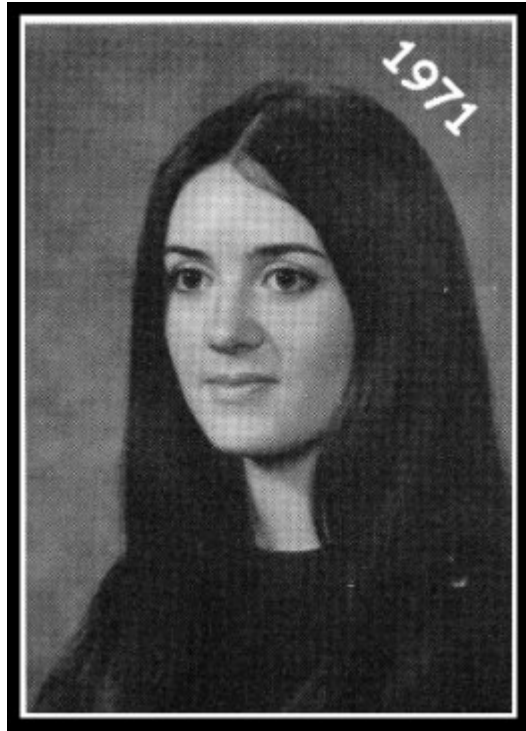


**BOMBER MEMORIAL**

**CONNIE JANE RICHEY ESHLEMAN ~ Class of 1971**

February 27, 1953 - March 7, 2013



Connie passed away on March 7, 2013 in Santa Cruz, CA after a very brief but strong battle with cancer.

She was born on February 27, 1953 in Richland, graduated from Columbia High School in 1971, and moved to California where she lived the remainder of her life and raised her two beautiful children. Connie was a talented interior designer and a smart and savvy businesswoman, investing in and managing multiple real estate properties.

Connie is survived by her son and daughter, Jordan and Lindsay (Josh) Eshleman Logan; mother and stepfather, Beverley and Charlie Raffety ('57); brother Scott Richey ('73) and sister Jill Richey Bruun ('78), and their families; and numerous aunts, uncles, cousins, and friends.

We will all miss her tremendous love, wit, and creativity. Please join us in a celebration of her gifts at 5pm on Friday, March 22 at Westside Church, 615 Wright, in Richland. Her family is putting together a slide show for the event and has requested that anyone who has pictures of Connie - in particular from our 40th Class reunion - pass them along.

In lieu of flowers, donations can be made to a cancer or hospice charity of your choice.

Santa Cruz-Watsonville Cremation and Burial Service in Soquel, CA, is in charge of arrangements.

Published in the *Tri-City Herald* on March 17, 2013.